

RF Series Filters

RF Series filters are filtering systems that would keep the dusty material inside the closed environment, to which it is being loaded to. As the air pushes the material inside, it will try to leave the closed environment somehow. RF Series filter will keep that leaving air 99.9% free of dust.

Main Body and Cover

Body and cover can be produced in different materials with different combinations depending on the customer request.

- ST37/ST37
- ST AISI304/AISI304
- ST37/AISI304
- AISI304/ST37

Body of the RF filters can be produced in 400mm, 600mm, 800mm and 1200mm depending on the capacity and filtering element quantity.

Filtering Elements

RF Series filters can be supplied with two main types of filtering elements; cartridge type and bag type elements.

These filtering elements can be (up on request) provided with oil repellent and moisture repellent fabric.

Filtering Area

Depending on the application and material, RF Series filters will be supplied with the right type of filtering element. Based on all these, filtering area of the unit can range from 6m² up to 36m².

Fan/Ventilation Options

Up on request, RF Series filters will be supplied with fans ranging from 0.75kW to 11kW. Smaller fans will be installed on top of the filter, while bigger ones will require an additional frame.

Product Code System

1	2	3	4	5	6	7
RF	S	06	0400	1	1	0


1	Product Type	Filter					
2	Type	S	Standart	F	With Fan		
3	Filtering Area	06	6m ²	09	9m ²	12	12m ²
		18	18m ²	24	24m ²	36	36m ²
4	Body Diameter	0400	400mm	0600	600mm	0800	800mm
		1200	1200mm				
5	Body/Cover	1	304/304	2	ST37/304	3	304/ST37
		4	ST37/ST37				
6	Filtering Element	1	Cartridge	2	Bag Type		
7	Fan	1	0.75kW	2	1.1kW	3	1.5kW
		4	2.2kW	5	3kW	6	4kW
		7	5.5kW	8	7.5kW	9	11kW

Label

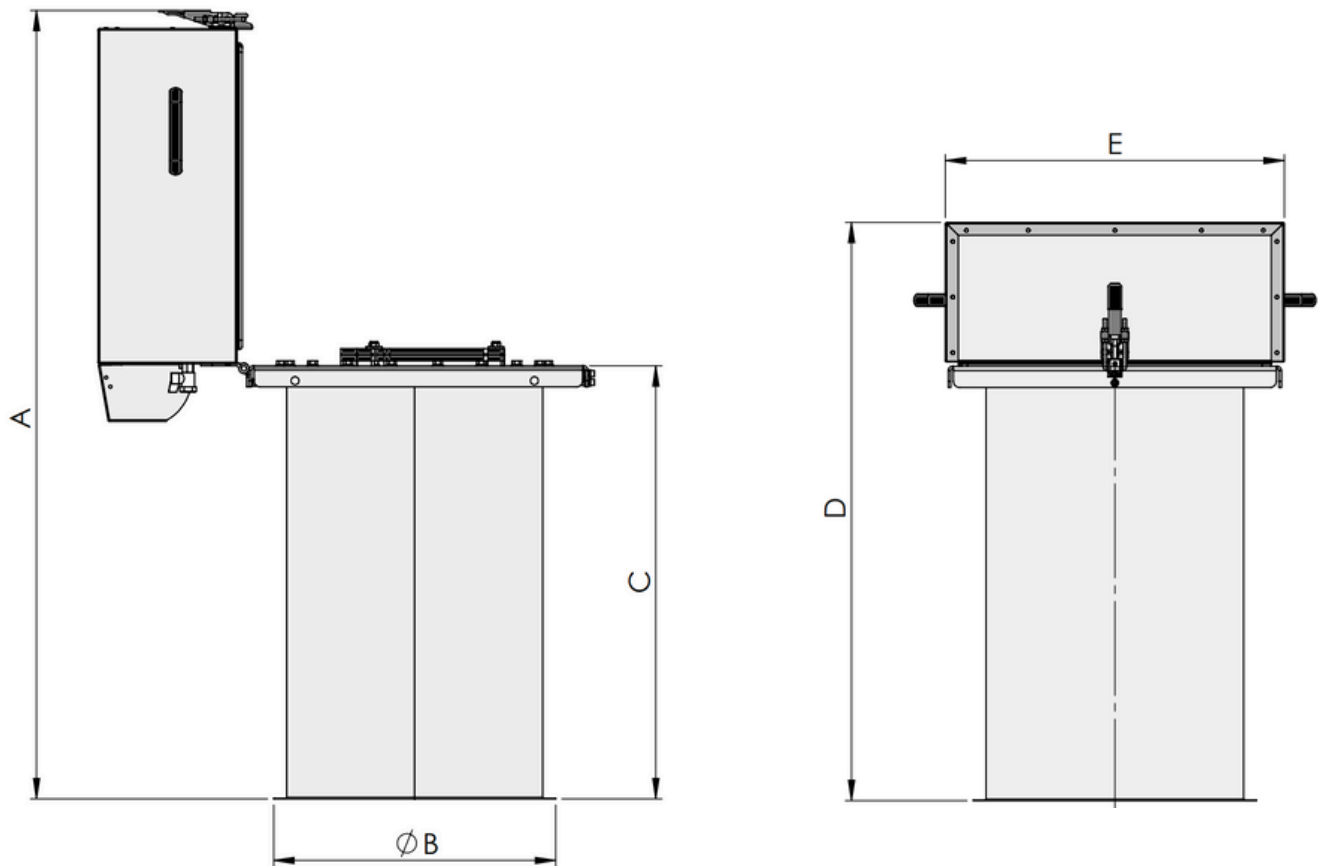
Serial Number (Product Type/Production Year/Production Month/Unit Number
in Production Line

Product General Specs (Filtration Area/Body Diameter/
Body and Cover Material/Filtering Element Type/
Fan Option)

Product Code (See "Product Code System")

Product: <u>RES06400110</u>	Serial No: <u>RF2408-01</u>
<u>6m² 400mm AISI304 Cartridge Without Fan</u>	<u>2024</u>
MAX 5 BAR	
 FUBAA <small>CONCRETE MACHINERY, ENGINEERING</small>	EAC www.fubaamachinery.com MADE IN TÜRKİYE Manufacturer: Proer Makine ve Sanayi ve Ticaret Limited Şirketi Saray Mahallesi, 675. cadde 8/B Kahramankazan / Ankara

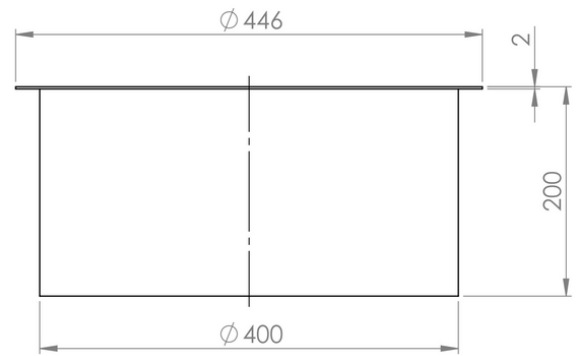
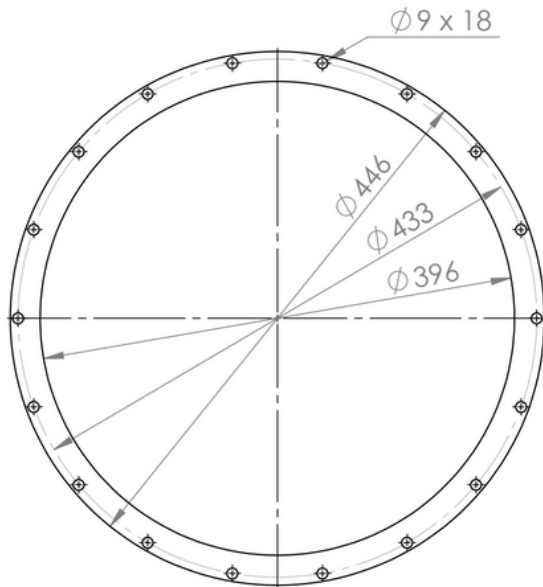
Dimensions



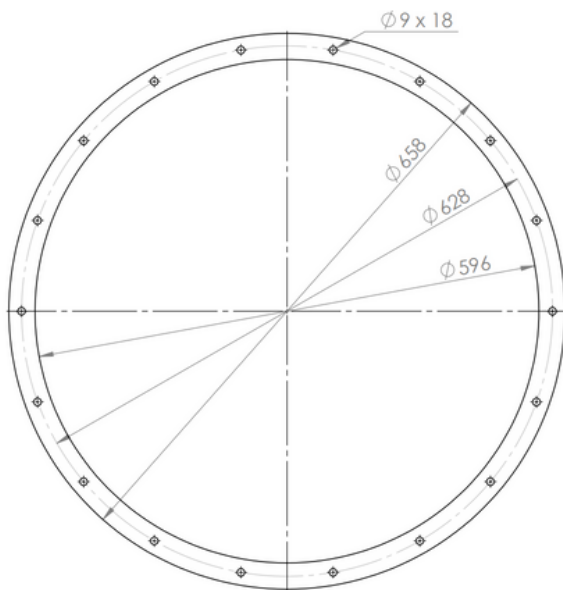
	A	B	C	D	E
6m²	1280	400	700	900	550
9m²	1530	400	950	1150	550
12m²	1420	600	700	900	700
18m²	1670	600	950	1150	700
24m²	1610	800	700	900	910
36m²	1860	800	950	1150	910

Connection Flange

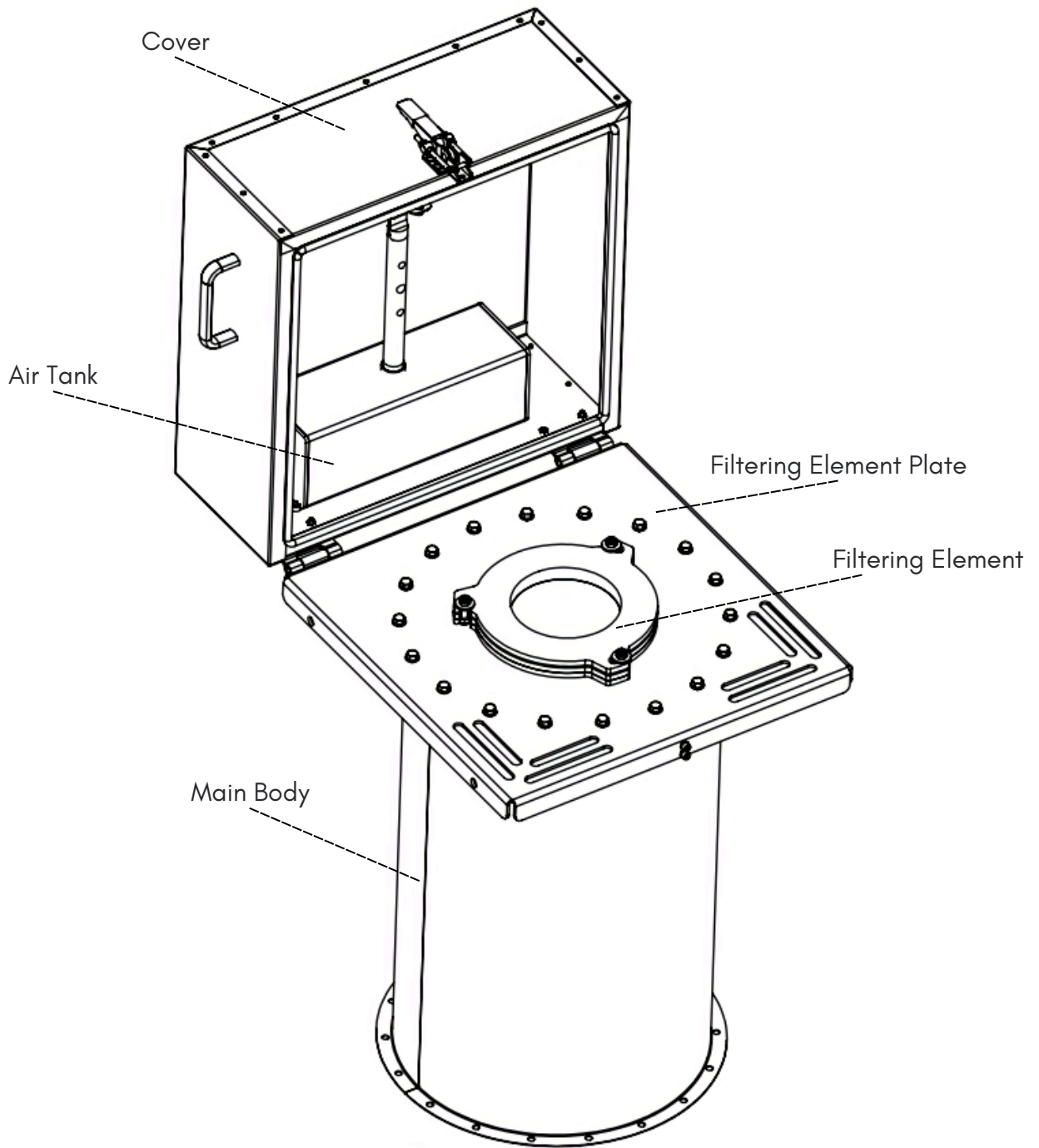
400mm Body Flange



600mm Body Flange



RF Components

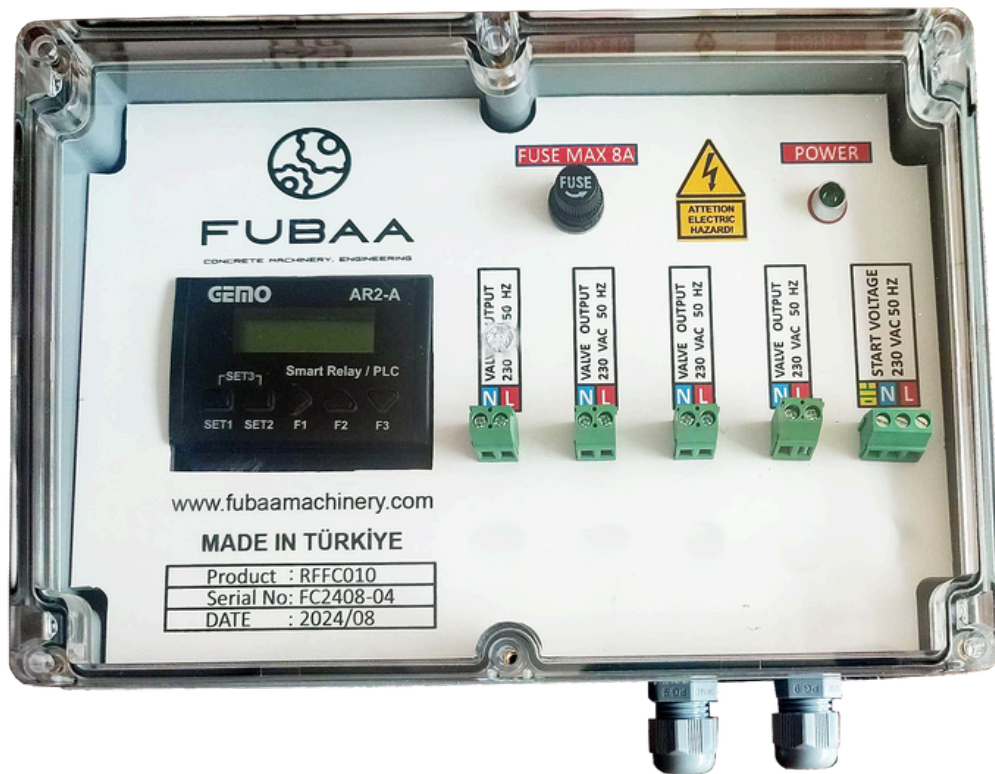


Control Card

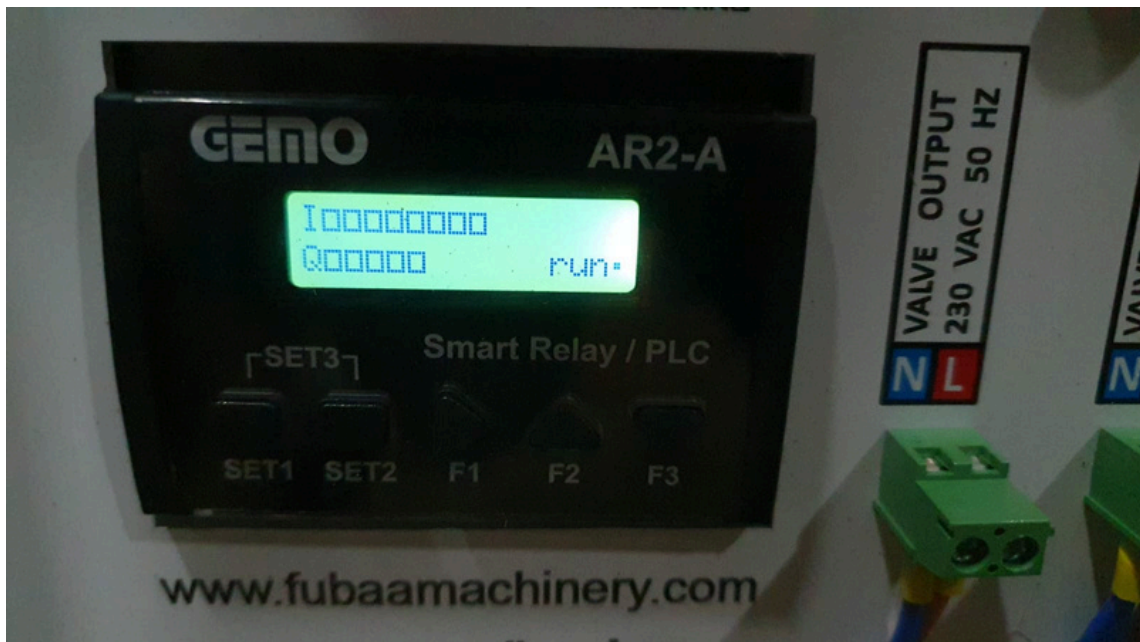
Control Card (RFFC) unit is the brains of the unit. Board has different functions and can control different aspects of the unit. Located on the back side of the filter, covered by a water and dust resistant casing. Control board settings:

- Pulse intervals
- Pulse length

If the connected electro valve socket is broken or not working properly, software will automatically forward all the signal to an empty/working socket. If a socket burns during operation, physical action is NOT required. Filter will keep operating normally until all the sockets are burnt.



Settings on RFFC

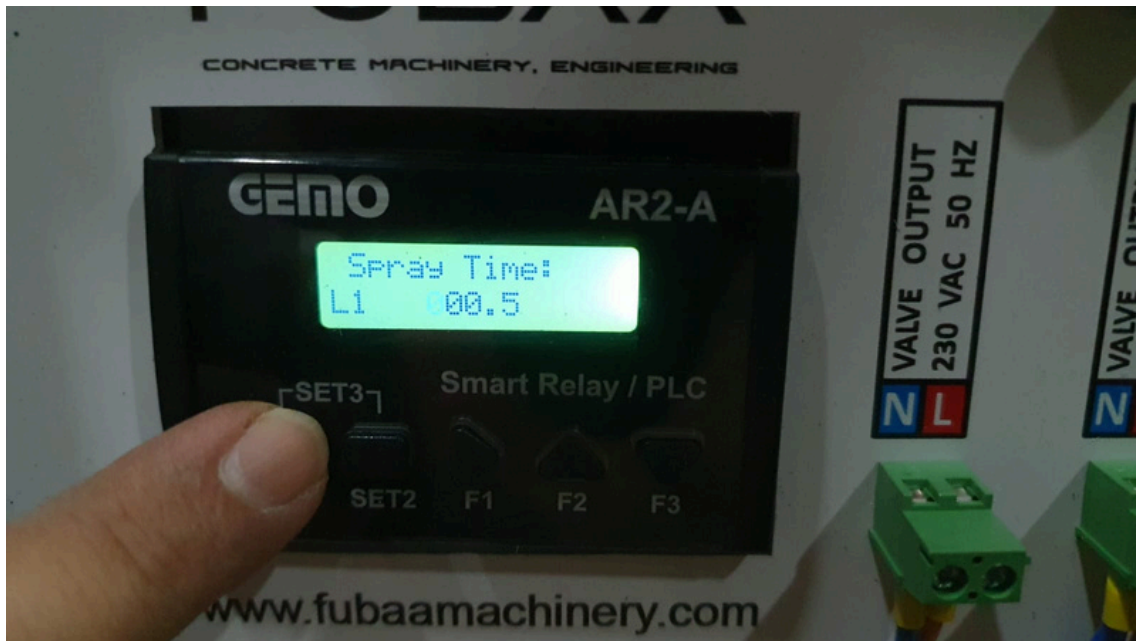


SET1 - changes the screen. By pressing this button you will see the screens "Waiting Time" and "Spray Time".

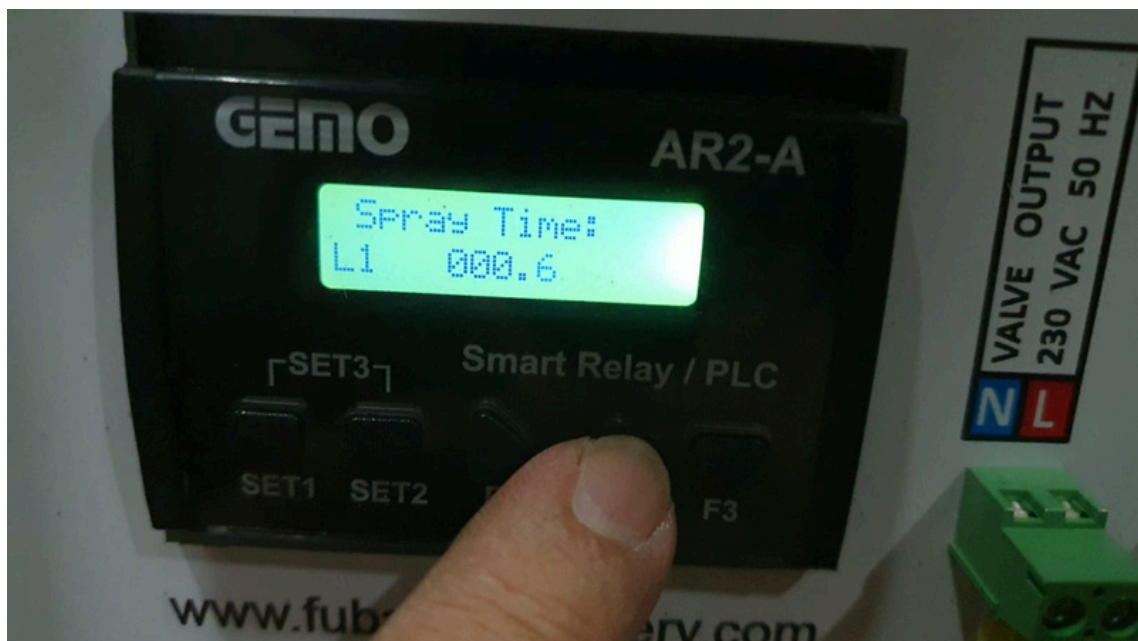
F1 - this button allows you to select the value/number you are editing. You will keep going right and eventually come back to start by pressing this button.

F2 and F3 - these buttons will allow you to increase or decrease the value you selected respectively

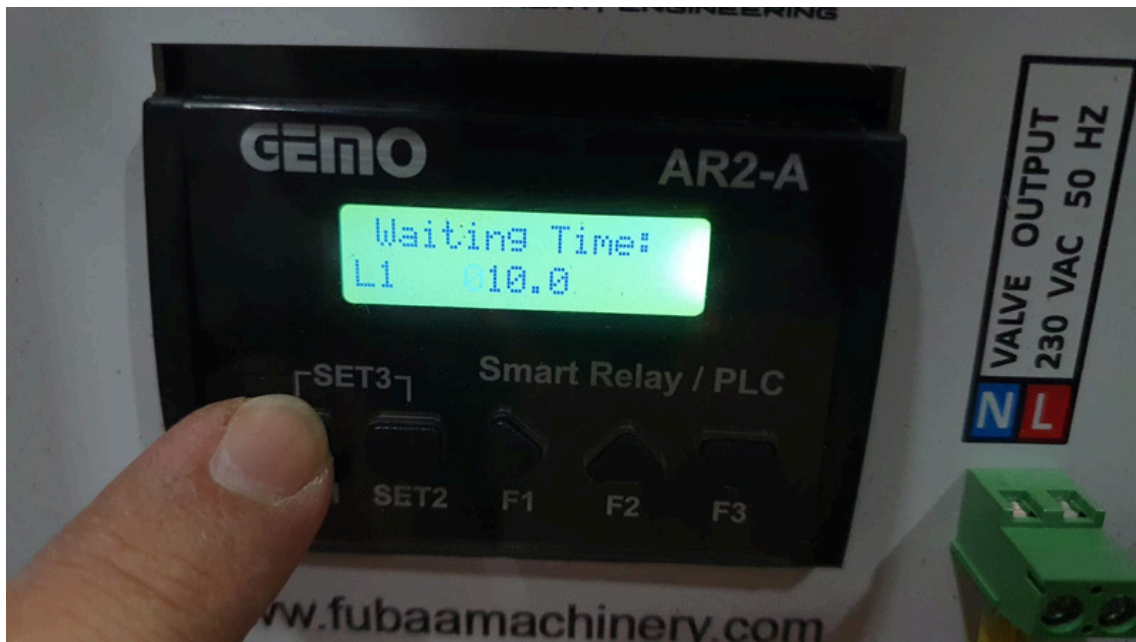
Changing "Spray Time"



Press SET1 button until you see "Spray Time" settings screen. By pressing F2 and F3 you can change the value. It is set to 0.5 seconds as default. Increasing this value might require a longer time for the air tank to fill up.



Changing "Waiting Time"



Press SET1 button until you see "Waiting Time" settings screen. By pressing F2 and F3 you can change the value. It is set to 10 seconds as default. Decreasing this value might require a longer time for the air tank to fill up.

Filtering Element and Filtering Media

Cartridge type filtering elements, ensure high life-span not just because of the good product design, but also thanks to its top-notch specs.

Material		100% Polyester
Construction		Spunbond
Treatment		OLEO/HYDROPHOBIC
Permeability	M3/M2/H AT 200PA	408
Weight	G/M2	260
Elongation MD	%	18.6
Elongation CD	%	24.8
Thickness	MM	0.54
Fiber Size	DENIER	1.2-2.7
Tenstile Strength MD	N	512.4
Tenstile Strength CD	N	518.3
Tear Strength MD	N	386.7
Tear Strength CD	N	358.2
Thermal Shrinkage MD	%	0.67
Thermal Shrinkage CD	%	0.32
Mullen Burs	KG/CM2	25

Temperature Resistance	C	120
OLEO/HYDROPHOBIC Res.		Excellent
Acid Resistance		Good
Alkaline Resistance		Good
Dust Release		Excellent
Filter Test	BIA	M
Efficiency of 0.3 Micron	%	48

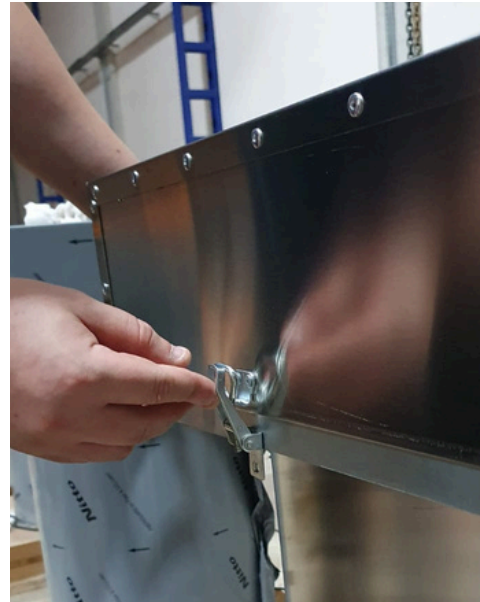


How to Change or Clean Cartridge

Changing or cleaning the cartridges of RF series' filters is very easy and requires simple tools.



1 - Hold the latch and push it up.



2 - When the lock is released, pull it away from slot and open the cover.



3 - Release the the bolts with an 13 spanner and take the cartridge off.



4 - After changing/cleaning the cartridge, pull the cover from left handle and push the right lock up as shown.



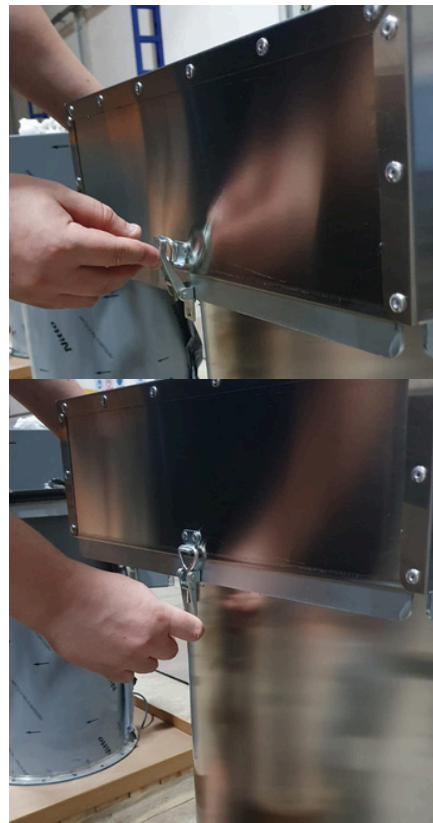
4a - Pull the right lock up while pushing the cover towards yourself. It should stay inclined as shown.



5 - Do the same with same lock and cover should be released.



6 - Close the cover.



7 - Repeat the steps 2&1 backwards to lock the cover safely.



FUBAA

CONCRETE MACHINERY, ENGINEERING

Established by one engineer and one sales person, FUBAA brand aims to expand it's existence to where the others fear.

Being extremely flexible and quick, gives our brand a huge advantage over the others. Having over 10+ years of experience in bulk handling materials, FUBAA brand can, not only produce the "product" customer needs, but can also to supply, re-design and export what already exists.